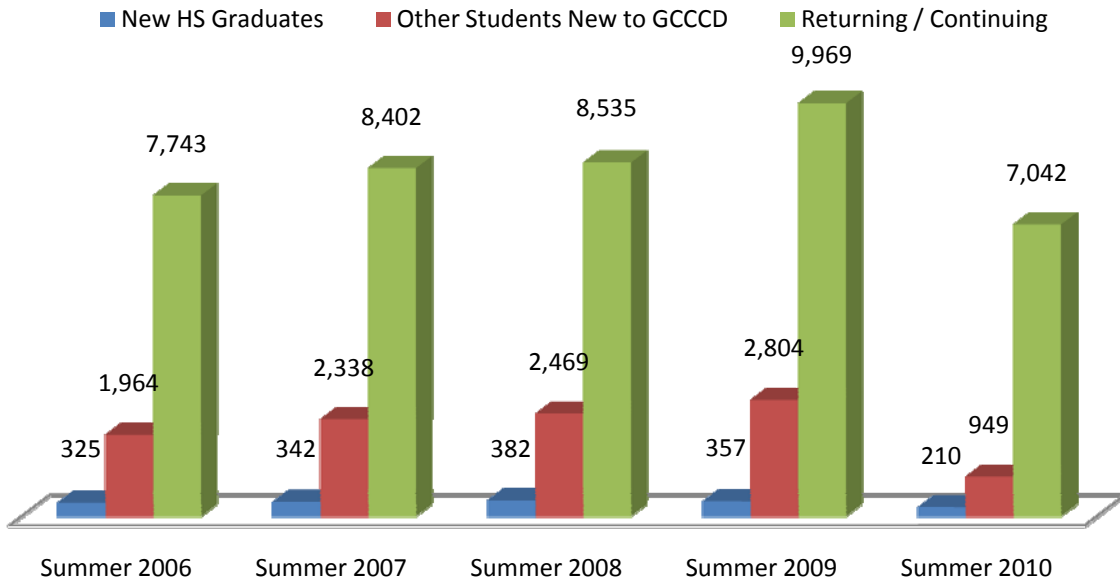


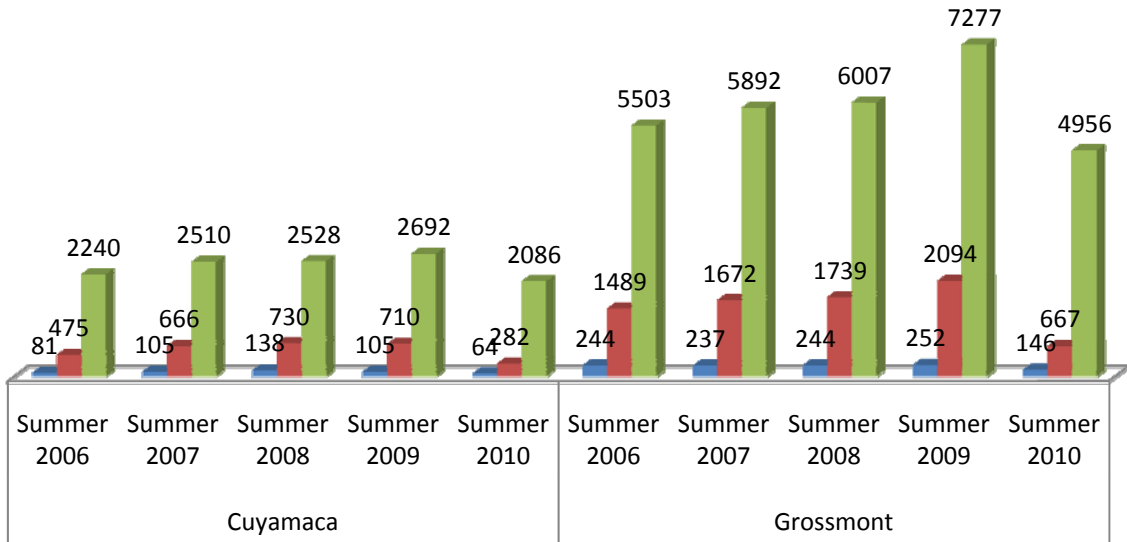
GCCCD Summer Enrollment



Summary: Roughly 14% of Summer 2010 students were new to the district, whereas 86% were returning students. High school graduates currently represent about 2.5% of new students enrolling at GCCCD. In the past five years there has been a decline of nearly 1% in new high school graduate enrollments. Prior to Summer 2010 returning students represented 75% and students new to the district represented 25%. The following graphs describe the diversity of students new to GCCCD, examining whether these students came from other 2-year colleges, 4-year colleges, or were co-enrolled at other 2-year and 4-year institutions. Over a three year period, 4-5% of new students came from other 2-year schools, while 12-15% came from 4-year universities, and less than 2% were co-enrolled at both 2 and 4-year schools simultaneously while attending either Cuyamaca or Grossmont College.

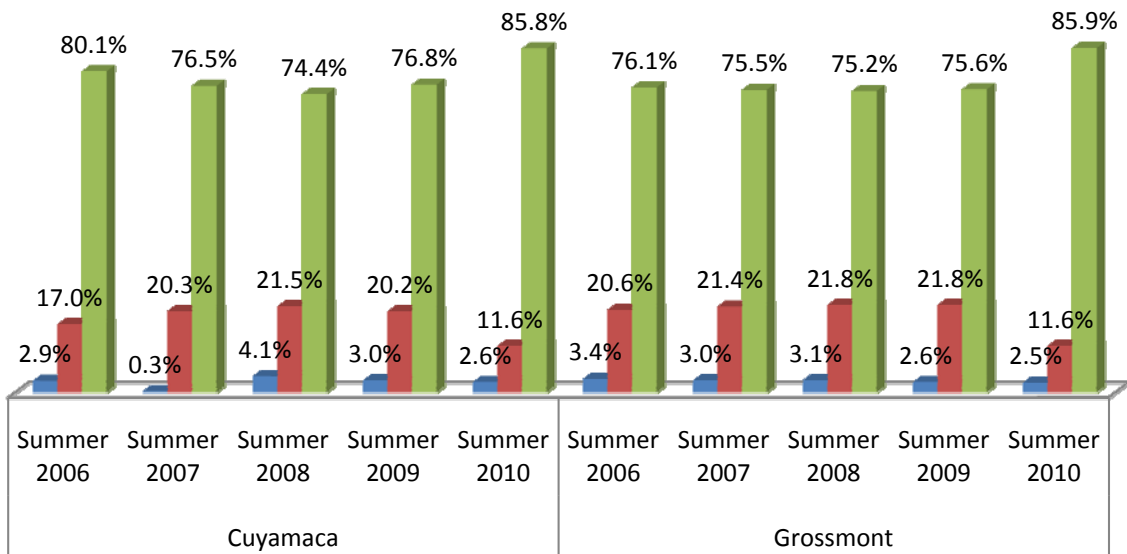
Summer Enrollments

■ New HS Graduates
 ■ Other Students New to GCCCD
 ■ Returning / Continuing

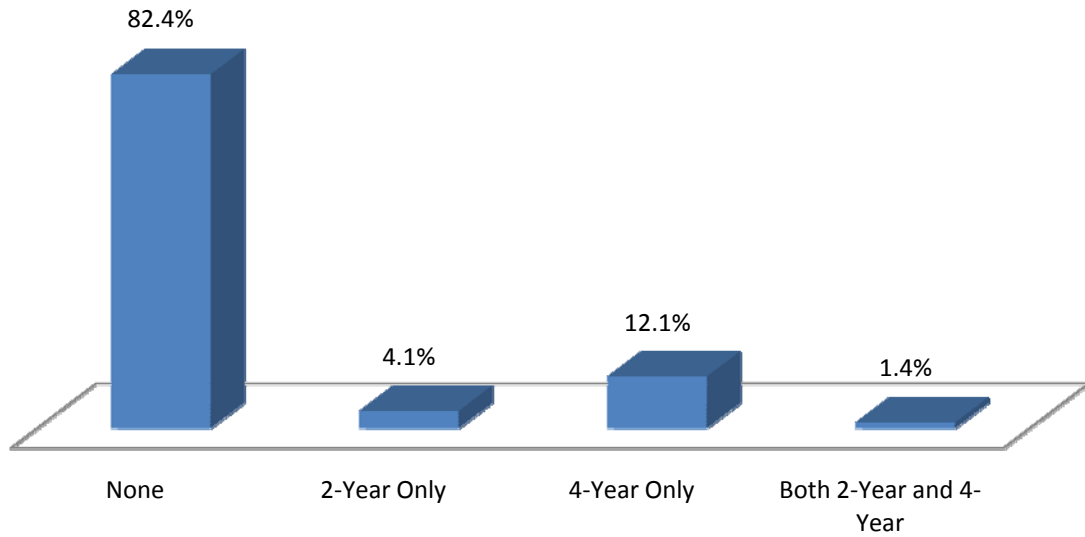


Summer Enrollments by Percent

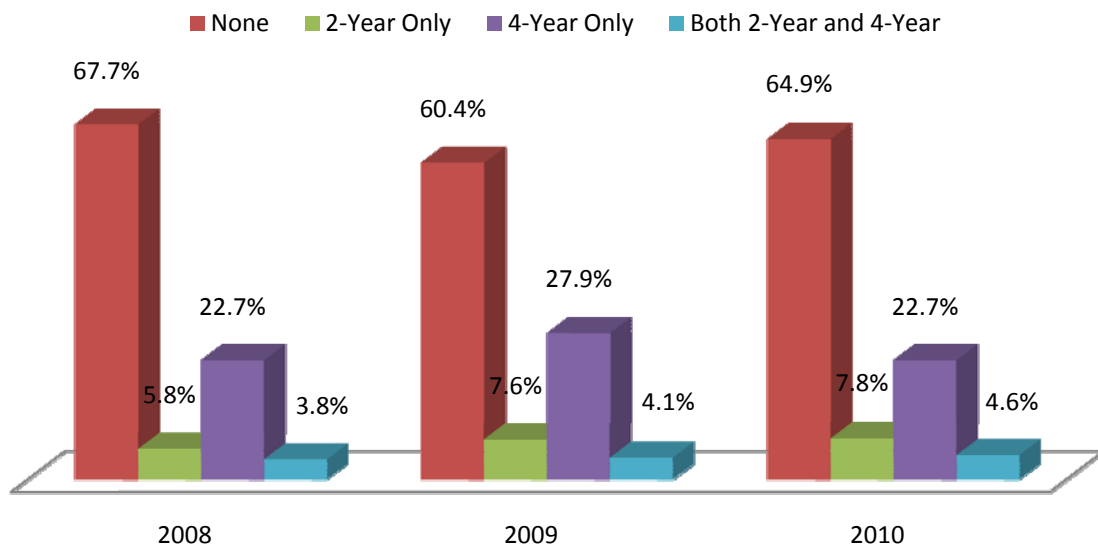
■ New HS Graduates
 ■ Other Students New to GCCCD
 ■ Returning / Continuing



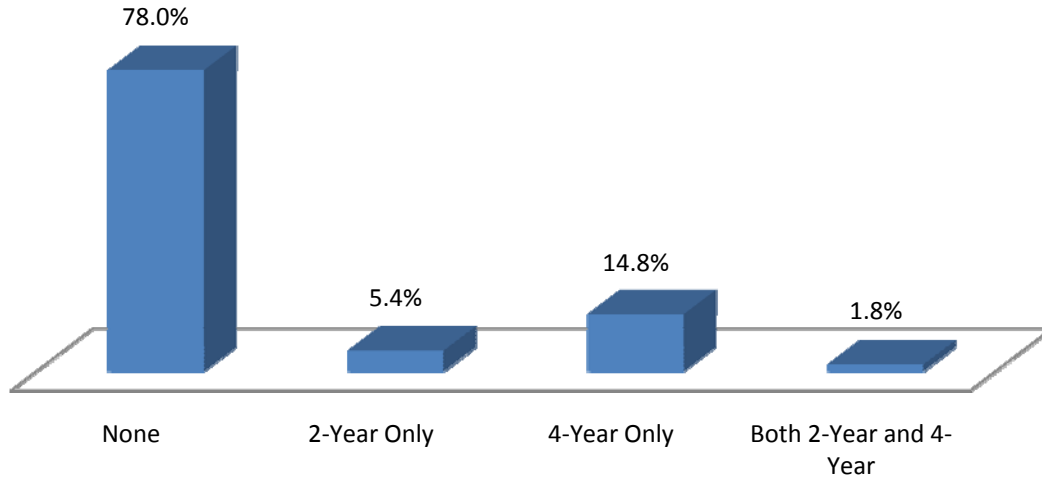
Cuyamaca College Recent College Experience of Summer School Students (2008-2010)



Cuyamaca College Recent College Experience of Students New to GCCCD



Grossmont College Recent College Experience of Summer School Students (2008-2010)



Grossmont College Recent College Experience of Students New to GCCCD

