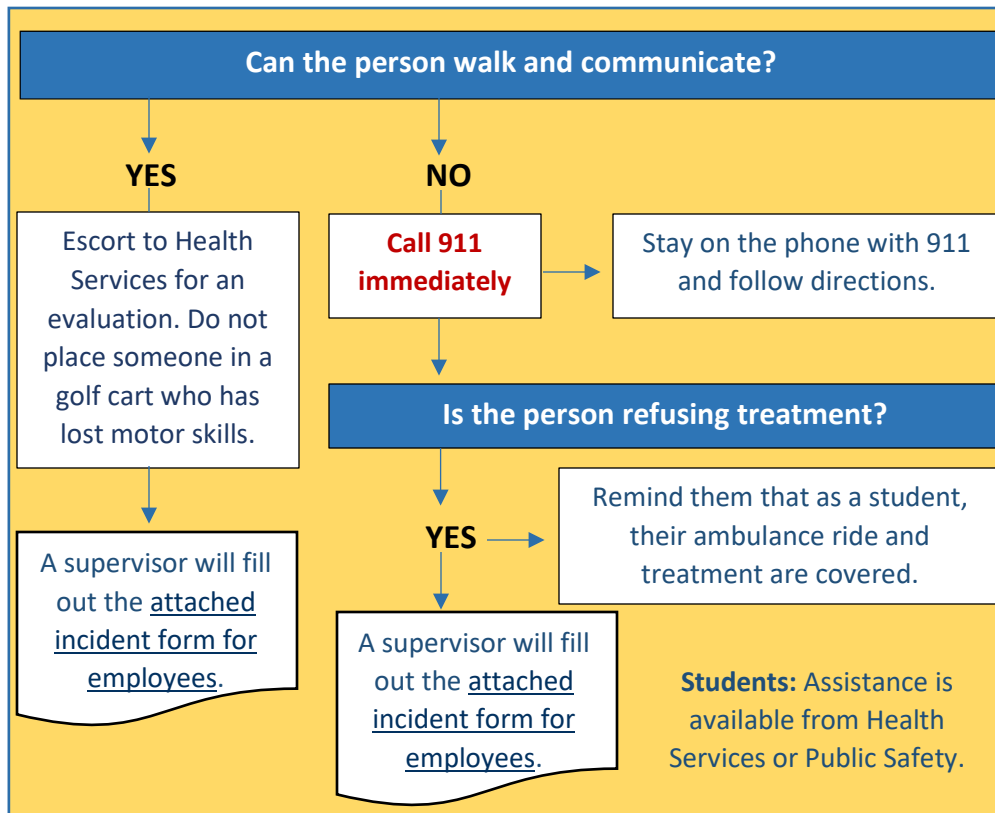


# Medical Emergencies

## What do I do?



Most employees have not been on campus for the past two years. Below is a refresher for procedures regarding on campus medical emergencies.



### Quick Facts

On average, it takes medical responders approximately 6-8 minutes to arrive at a scene.

Not calling 911 immediately delays precious minutes for first responders.

Campus and Parking Services personnel will often meet responders at the entrances of campus to lead them to a location quickly.

Our DACA & immigrant students should never refuse assistance out of fear. Assure them that their status is not being evaluated receiving medical care. Their health and safety is our top priority and they need to receive proper medical care.

You can dial 911 from any campus phone to receive services. You do not have to dial an extra 9 to get an outside line.

### Mental Health Emergencies?

Call 911 - Our Sheriff's team can deploy a [PERT](#) (Psychiatric Emergency Response Team) member to assist. Threats of suicide, self-harm or harm to others should be taken seriously and PERT clinicians are trained to handle these situations delicately.

### Employee Company Nurse Hotline for Injury Triage

1-888-770-0929

Search Code: GCCCD



### CONTACTS

HUMAN RESOURCES COORDINATOR X7039  
GROSSMONT COLLEGE HEALTH SERVICES NURSE X7194  
CUYAMACA COLLEGE HEALTH SERVICES NURSE X4200  
DIRECTOR OF PUBLIC SAFETY X7627